

TDC Series NEMA Premium Efficiency 3-Phase Motors

7.5HP thru 250HP

- 254T thru 449T
- Cast Iron ODP

FEATURES

- Continuous Duty 40°C Ambient
- Cast Iron frames
- Ball Bearings
- IP23 Protection

APPLICATIONS

- Pumps
- Compressors
- Fans
- Machine Tools
- Other General Purpose Three Phase Applications

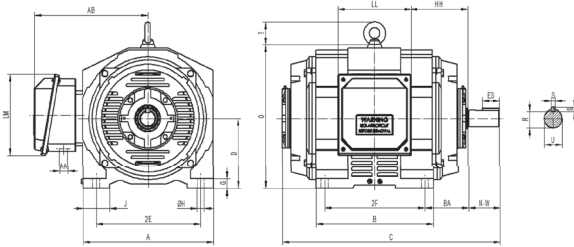
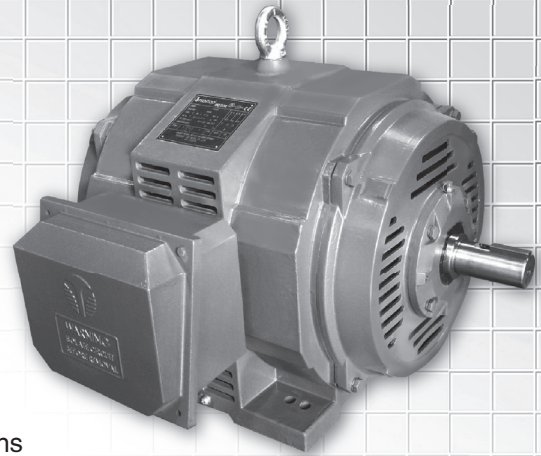


Figure 1 Foot Mounted

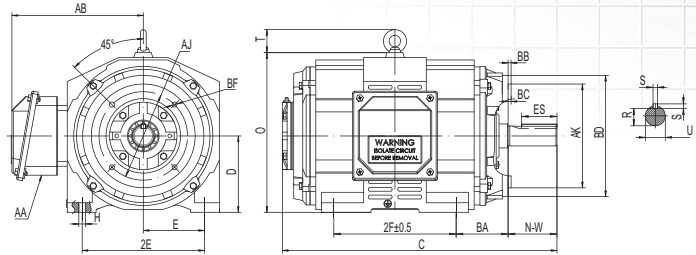


Figure 2 C-Face, Foot Mounted

Frame	FootMounting				Shaft					General					C-Face						
	2E	2F	H	BA	N-W	U	S	R	ES	C	D	O	T	AA	AB	AJ	AK	BB	BC	BD	BF
254TC	10	8.25	0.53	4.25	4	1.625	0.375	1.416	2.91	22.46	6.25	13.06	2.047	1-1/4	10.83	7.25	8.5	0.25	0.25	10	4x1/2-13
256TC		10		4.75																	
284TSC	11	9.5	0.53	4.75	3.25	1.625	0.375	1.416	1.91	23.48	7	14.87	2.441	1-1/2	11.62	9	10.5	0.25	0.25	11.25	4x1/2-13
286TSC		11																			
284TC		9.5																			
286TC		11																			
324TSC	12.5	10.5	0.66	5.25	3.75	1.875	0.5	1.591	2.03	26.05	8	16.39	2.441	2	13.62	11	12.5	0.25	0.25	14	4x5/8-11
326TSC		12																			
324TC		10.5																			
326TC		12																			
364TSC	14	11.25	0.66	5.88	3.75	1.875	0.5	1.591	2.03	27.29	9	19	2.835	3	15.23	11	12.5	0.25	0.25	14	8x5/8-11
365TSC		12.25																			
364TC		11.25																			
365TC		12.25																			
404TSC	16	12.25	0.81	0.62	4.25	2.215	0.5	1.845	2.78	30.86	10	20.95	3.465	3	16.72	11	12.5	0.25	0.25	15.5	8x5/8-11
405TSC		13.75																			
404TC		12.25																			
405TC		13.75																			
444TSC	18	14.5	0.81	7.5	4.75	2.375	0.625	2.021	3.03	35.72	11	23.09	3.465	3	18.31	14	16	0.25	0.25	18	8x5/8-11
445TSC		16.5																			
444TC		14.5																			
445TC		16.5																			
447TSC		20																			
449TSC		25																			
447TC		20																			
449TC		25																			
447TC		20																			
449TC		25																			
449TC	25	4.134																			

IEC MOTOR
FIRE PUMP MOTOR
GOST MOTOR
VHS MOTOR
H.T. MOTOR
S.S. MOTOR
NEMA MOTOR
EC MOTOR

T DC Series NEMA Motor Installation Dimensions

NEMA Frames	MOUNTING				A	B	C	D	G	J	O	T
	2E	2F	H	BA								
254T	10.00	8.25	0.53	4.25	12.44	12.00	22.46	6.25	0.78	2.36	13.06	2.047
256T		10.00										
284T	11.00	9.50	0.53	4.75	14.17	13.03	24.85	7.00	0.90	3.15	14.87	2.441
286T		11.00										
284TS		9.50										
286TS		11.00										
324T		10.50										
326T	12.50	12.00	0.66	5.25	15.59	14.06	27.55	8.00	1.11	3.15	16.39	2.441
324TS		10.50										
326TS		12.00										
364T		11.25										
365T	14.00	12.25	0.66	5.88	18.03	14.92	29.42	9.00	1.26	3.54	19.00	2.835
364TS		11.25										
365TS		12.25										
404T		12.25										
405T	16.00	13.75	0.81	6.62	19.92	16.97	33.86	10.00	1.34	3.74	20.95	3.465
404TS		12.25										
405TS		13.75										
444T		14.50										
445T	18.00	16.50	0.81	7.50	22.05	20.08	39.47	11.00	1.43	4.33	23.09	3.465
444TS		14.50										
445TS		16.50										
447T		20.00										
449T	18.00	25.00	0.81	7.50	22.05	28.58	47.97	11.00	1.43	4.33	23.09	4.134
447TS		20.00										
449TS		25.00										
449TS		25.00										

NEMA Frames	KEYWAY			SHAFT		TERAINAL BOX					BEARINGS	
	S	R	ES	N-W	U	AB	HH	LL	LM	AA	D.E	N.D.E
254T	0.375	1.416	2.91	4.0	1.625	10.83	5.77	6.97	7.31	1-1/4	6309 C3	
256T												
284T	0.5	1.591	3.28	4.62	1.875	11.62	6.77	6.97	7.31	1-1/2	6311 C3	
286T												
284TS	0.375	1.416	1.91	3.25	1.625	13.62	6.86	8.78	9.23	2	6312 C3	
286TS												
324T	0.5	1.845	3.91	5.25	2.125	15.23	6.83	10.36	9.23	3	6313 C3	
326T												
324TS	0.5	1.591	2.03	3.75	1.875	16.72	8.28	10.44	11.56	3	6316C3	6314C3
326TS												
364T	0.625	2.021	4.28	5.88	2.375	18.31	9.39	12.72	14.58	3	6319C3	6316C3
365T												
364TS	0.5	1.591	2.03	3.75	1.875	18.31	3.9	12.72	14.58	3	6316C3	6316C3
365TS												
404T	0.75	2.45	5.65	7.25	2.875	18.31	3.9	12.72	14.58	3	6319C3	6316C3
405T												
404TS	0.5	1.845	2.78	4.25	2.125	18.31	3.9	12.72	14.58	3	6316C3	6316C3
405TS												
444T	0.875	2.88	6.91	8.5	3.375	18.31	3.9	12.72	14.58	3	6319C3	6316C3
445T												
444TS	0.625	2.021	3.03	4.75	2.375	18.31	3.9	12.72	14.58	3	6316C3	6316C3
445TS												
447T	0.875	2.88	6.91	8.5	3.375	18.31	3.9	12.72	14.58	3	6319C3	6316C3
449T												
447TS	0.625	2.021	3.03	4.75	2.375	18.31	3.9	12.72	14.58	3	6316C3	6316C3
449TS												

*Dimensions in inches.



DC Series NEMA Premium Efficiency ODP Motor Technical Data-Design B (60Hz)

HP	Full Load Speed (r/min)	NEMA Frame	Full Load Current			Eff. 100%FL	Power Factor (cosΦ)	Full Load Torque lbf-ft	KVA Code	Locked Rotor		BDT (%FL)	Service Factor	W.T (lbs)
			I _n 230V (A)	I _n 460V (A)	I _n 575V (A)					LRA 230V (A)	LRT (%FL)			
7.5	1170	254T	20.49	10.24	8.20	90.2	0.76	33.68	J	137	200	250	1.15	242.00
10	1170	256T	26.52	13.26	10.61	91.7	0.77	44.91	J	185	220	320	1.15	313.00
15	3540	254T	35.39	17.69	14.16	90.2	0.88	22.26	K	310	240	300	1.15	249.00
	1760	254T	35.96	17.98	14.38	93.0	0.84	44.78	J	300	260	330	1.15	273.00
	1175	284T	40.30	20.15	16.12	91.7	0.76	67.07	L	360	280	330	1.15	404.00
20	3530	256T	45.23	22.61	18.09	91.0	0.91	29.77	H	350	240	240	1.15	315.00
	1760	256T	45.76	22.88	18.31	93.0	0.88	59.71	J	400	280	310	1.15	370.00
	1175	286T	50.67	25.33	20.27	92.4	0.8	89.43	J	400	240	330	1.15	438.00
25	3550	284TS	60.06	30.03	24.02	91.7	0.85	37.00	H	415	280	330	1.15	394.00
	1770	284T	58.84	29.42	23.54	93.6	0.85	74.21	H	425	250	350	1.15	406.00
	1180	324T	61.39	30.69	24.56	93	0.82	111.32	J	460	300	380	1.15	546.00
30	3550	286TS	70.42	35.21	28.17	91.7	0.87	44.40	H	525	260	360	1.15	409.00
	1770	286T	68.62	34.31	27.45	94.1	0.87	89.05	H	520	260	360	1.15	431.00
	1180	326T	72.31	36.16	28.93	93.6	0.83	133.58	H	500	280	370	1.15	556.00
40	3560	324TS	90.07	45.04	36.03	92.4	0.9	59.04	H	650	270	320	1.15	530.00
	1770	324T	97.07	48.54	38.83	94.1	0.82	118.74	J	720	300	340	1.15	584.00
	1180	364T	93.65	46.82	37.46	94.1	0.85	178.11	H	700	250	270	1.15	736.50
50	3560	326TS	113.12	56.56	45.25	93.0	0.89	73.79	H	850	280	300	1.15	541.00
	1770	326T	117.95	58.98	47.18	94.5	0.84	148.42	J	960	300	340	1.15	606.00
	1180	365T	119.88	59.94	47.95	94.1	0.83	222.63	H	800	280	340	1.15	792.00
60	3560	364TS	136.41	68.20	54.56	93.6	0.88	88.55	H	1000	300	330	1.15	772.00
	1775	364T	135.94	67.97	54.38	95	0.87	177.61	H	1052	280	300	1.15	793.80
	1185	404T	141.54	70.77	56.62	94.5	0.84	266.03	H	1000	200	240	1.15	1019.00
75	3560	365TS	166.72	83.36	66.69	93.6	0.9	110.69	H	1150	300	330	1.15	842.00
	1775	365T	168.00	84.00	67.20	95	0.88	222.01	H	1183	280	370	1.15	863.00
	1185	405T	172.81	86.41	69.13	94.5	0.86	332.54	H	1200	200	240	1.15	1089.00
100	3570	405TS	219.85	109.93	87.94	93.6	0.91	147.18	H	1675	300	300	1.15	1025.00
	1780	405T	230.93	115.47	92.37	95.4	0.85	295.18	H	1700	280	320	1.15	1030.00
	1180	444T	229.21	114.60	91.68	95	0.86	445.27	H	1620	180	200	1.15	1656.00
125	3575	444TS	276.39	138.20	110.56	94.1	0.9	183.71	J	2200	300	400	1.15	1504.00
	1780	444T	278.82	139.41	111.53	95.4	0.88	368.97	J	2260	300	350	1.15	1546.00
	1180	445T	286.51	143.25	114.60	95	0.86	556.59	J	2230	175	200	1.15	1797.00
150	3575	445TS	331.67	165.84	132.67	94.1	0.9	220.45	H	2400	250	230	1.15	1610.00
	1780	445T	333.19	166.60	133.28	95.8	0.88	442.77	H	2430	270	290	1.15	1698.00
	1180	447T	340.94	170.47	136.38	95.8	0.86	667.90	H	2480	160	200	1.15	1921.00
200	3575	447TS	438.04	219.02	175.22	95	0.9	293.94	H	3350	200	230	1.15	1738.00
	1780	447T	439.26	219.63	175.71	95.8	0.89	590.36	H	3420	275	200	1.15	1934.00
	1180	449T	451.25	225.62	180.50	95.4	0.87	890.54	H	3360	160	200	1.15	2123.00
250	3575	449TS	547.55	273.78	219.02	95	0.9	367.42	H	4100	200	200	1.15	1954.00
	1780	449T	549.08	274.54	219.63	95.8	0.89	737.95	H	4150	200	210	1.15	2220.00

IEC MOTOR

FIRE PUMP MOTOR

GOST MOTOR

VHS MOTOR

H.T. MOTOR

S.S. MOTOR

NEMA MOTOR

EC MOTOR