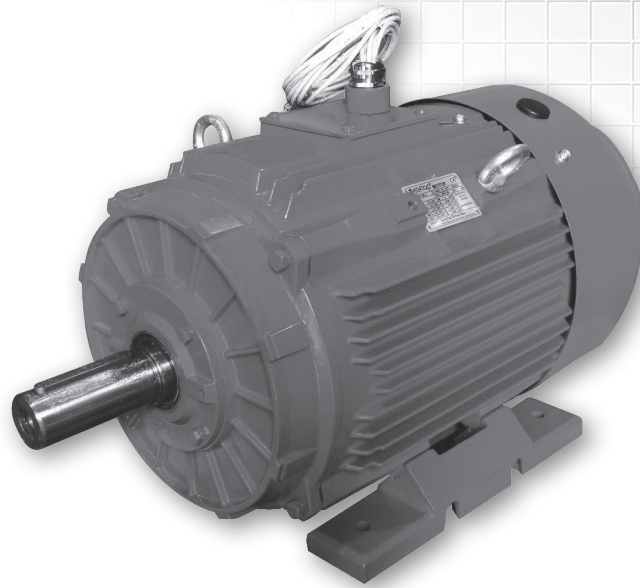


S-TC Series

High-temperature Smoke-extraction Motors



The motors are suitable to be used in the area where people get-together, such as shopping mall, factory, warehouse, parking-area, railway station and the likes. They are high-temperature resistant, able to extract smoke and abstract heat quickly, delay the spread of fire, to assure free access to emergency entrance.

Specifications:

Three phase, multi-voltage, IP55, TEFC

Output: From 0.75 to 355kW

Frame size: From 80 to 355

Voltage: 220-240/380-415V (100L and below),
380-415/660V-720V (112 and up)

Insulation class: H

Working duty: S1

Squirrel-cage rotor / Aluminum casting

Cooling type: TEFC or TEAO

2 meter leading wire (Without terminal box)

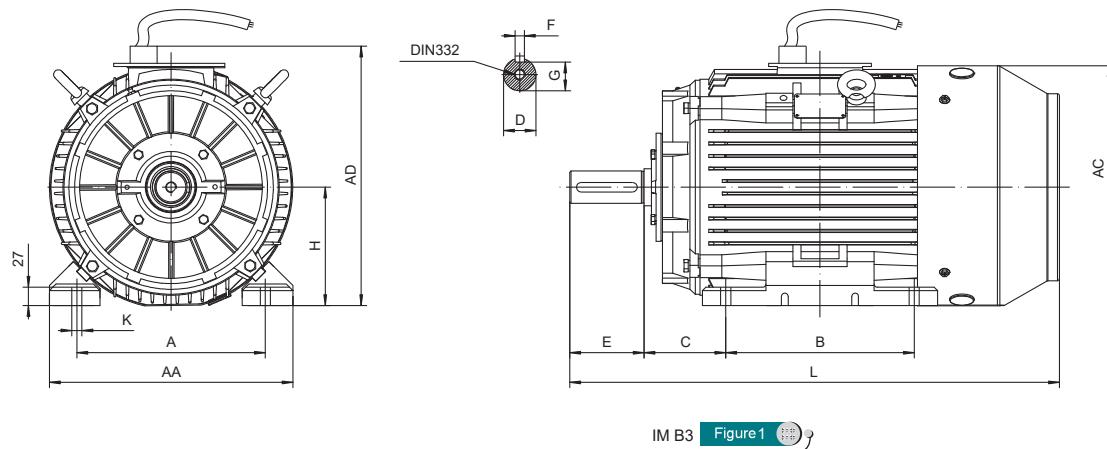
Stainless steel name-plate

Working with ventilator in normal condition.

In special condition, they can run for 2 hours in Max.300°C of ambient temperature according to the standard.

Products: S-T1C、S-T2C、S-T3C、S-TCI (S for smoke)

S-TC Series High-temperature Smoke-extraction Motors



Overall & Installation Dimensions

Frame	Foot Mounting				Shaft					General					
	H	A	B	C	D	E	F	G	K	AA	AD	HD	AC	L	
80M	80	125	100	50	φ 19	40	6	15.5	φ 9	154	195	134	φ 158	290	
90S/L	90	140	100/125	56	φ 24	50	8	20	φ 10	178	215	141	φ 176	320/345	
100L	100	160	140	63	φ 28	60	8	24	φ 12	203	235	151	φ 199	385	
112M	112	190	140	70	φ 28	60	8	24	φ 12	231	260	180	φ 220	405	
132S/M	132	216	140/178	89	φ 38	80	10	33	φ 12	263	300	200	φ 259	467/505	
160M/L	160	254	210/254	108	φ 42	110	12	37	φ 15	316	355	244	φ 313	605/650	
180M/L	180	279	241/279	121	φ 48	110	14	42.5	φ 15	354	390	265	φ 360	687/725	
200L	200	318	305	133	φ 55	110	16	49	φ 19	393	415	300	φ 399	768.5	
225S	4,6,8	225	356	286	149	φ 60	140	18	53	φ 19	440	465	333	φ 459	810
225M	2	225	356	311	149	φ 55	110	16	49	φ 19	440	465	333	φ 459	805
	4,6,8	225	356	311	149	φ 60	140	18	53	φ 19	440	465	333	φ 459	835
250M	2	250	406	349	168	φ 60	140	18	53	φ 24	484	515	366	φ 506	915
	4,6,8	250	406	349	168	φ 65	140	18	58	φ 24	484	515	366	φ 506	915
280S/M	2	280	457	368/419	190	φ 65	140	18	58	φ 24	560	575	395	φ 559	984/1035
	4,6,8	280	457	368/419	190	φ 75	140	20	67.5	φ 24	560	575	395	φ 559	984/1035
315S	2	315	508	406	216	φ 65	140	18	58	φ 28	628	620	510	φ 680	1205
	4,6,8	315	508	406	216	φ 80	170	22	71	φ 28	628	620	510	φ 680	1235
315M/L	2	315	508	457/508	216	φ 65	140	18	58	φ 28	628	620	510	φ 680	1355
	4,6,8	315	508	457/508	216	φ 80	170	22	71	φ 28	628	620	510	φ 680	1385
355M/L	2	355	610	560/630	254	φ 75	140	20	67.5	φ 28	740	820	655	φ 820	1495
	4,6,8	355	610	560/630	254	φ 95	170	25	86	φ 28	740	820	655	φ 820	1525
	4,6,8	355	610	560/630	254	φ 100	210	28	90	φ 28	740	820	655	φ 820	1565

S-T2C Series IE2 Efficiency High-temperature Smoke-extraction Motors Technical Data(400V/50Hz)

Table with columns: Model, Power (KW), Speed (r/min), FL Current (A), Eff (%), PF (COSΦ), Tn (N.M), Iq/In (Times), Tq/Tn (Times), Tmax/Tn (Times), Tm/Tn (Times), Net weight (kg), Moment of inertia (kg·m²). Rows include 2 Pole 3000 rpm, 4 Pole 1500 rpm, and 6 Pole 1000 rpm synchronous speed motors.

